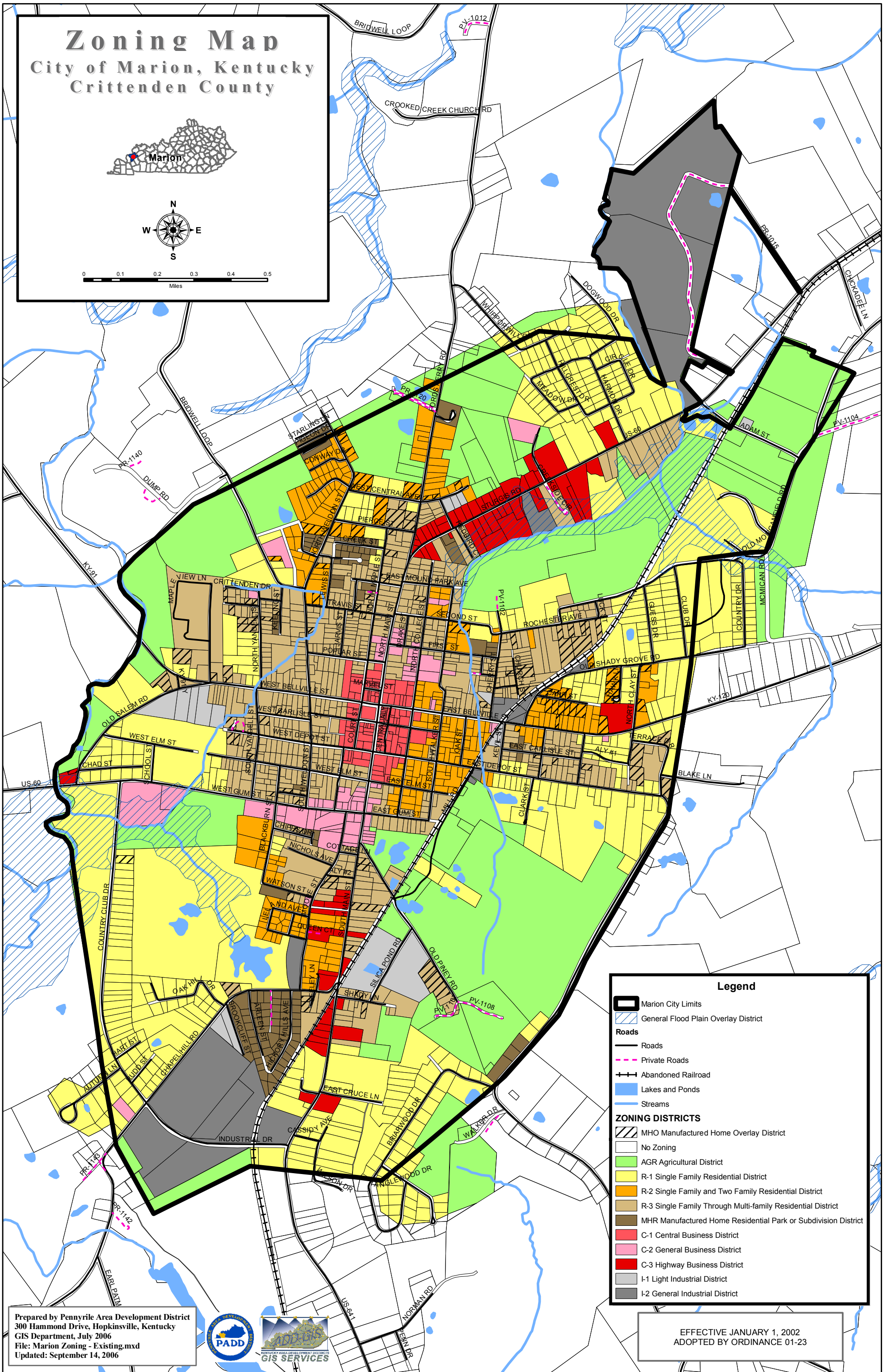
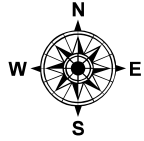


Zoning Map

City of Marion, Kentucky

Crittenden County



Legend

- Marion City Limits
- General Flood Plain Overlay District
- Roads**
 - Roads
 - Private Roads
 - Abandoned Railroad
 - Lakes and Ponds
 - Streams
- ZONING DISTRICTS**
 - MHO Manufactured Home Overlay District
 - No Zoning
 - AGR Agricultural District
 - R-1 Single Family Residential District
 - R-2 Single Family and Two Family Residential District
 - R-3 Single Family Through Multi-family Residential District
 - MHR Manufactured Home Residential Park or Subdivision District
 - C-1 Central Business District
 - C-2 General Business District
 - C-3 Highway Business District
 - I-1 Light Industrial District
 - I-2 General Industrial District

Prepared by Pennyrile Area Development District
 300 Hammond Drive, Hopkinsville, Kentucky
 GIS Department, July 2006
 File: Marion Zoning - Existing.mxd
 Updated: September 14, 2006



EFFECTIVE JANUARY 1, 2002
 ADOPTED BY ORDINANCE 01-23